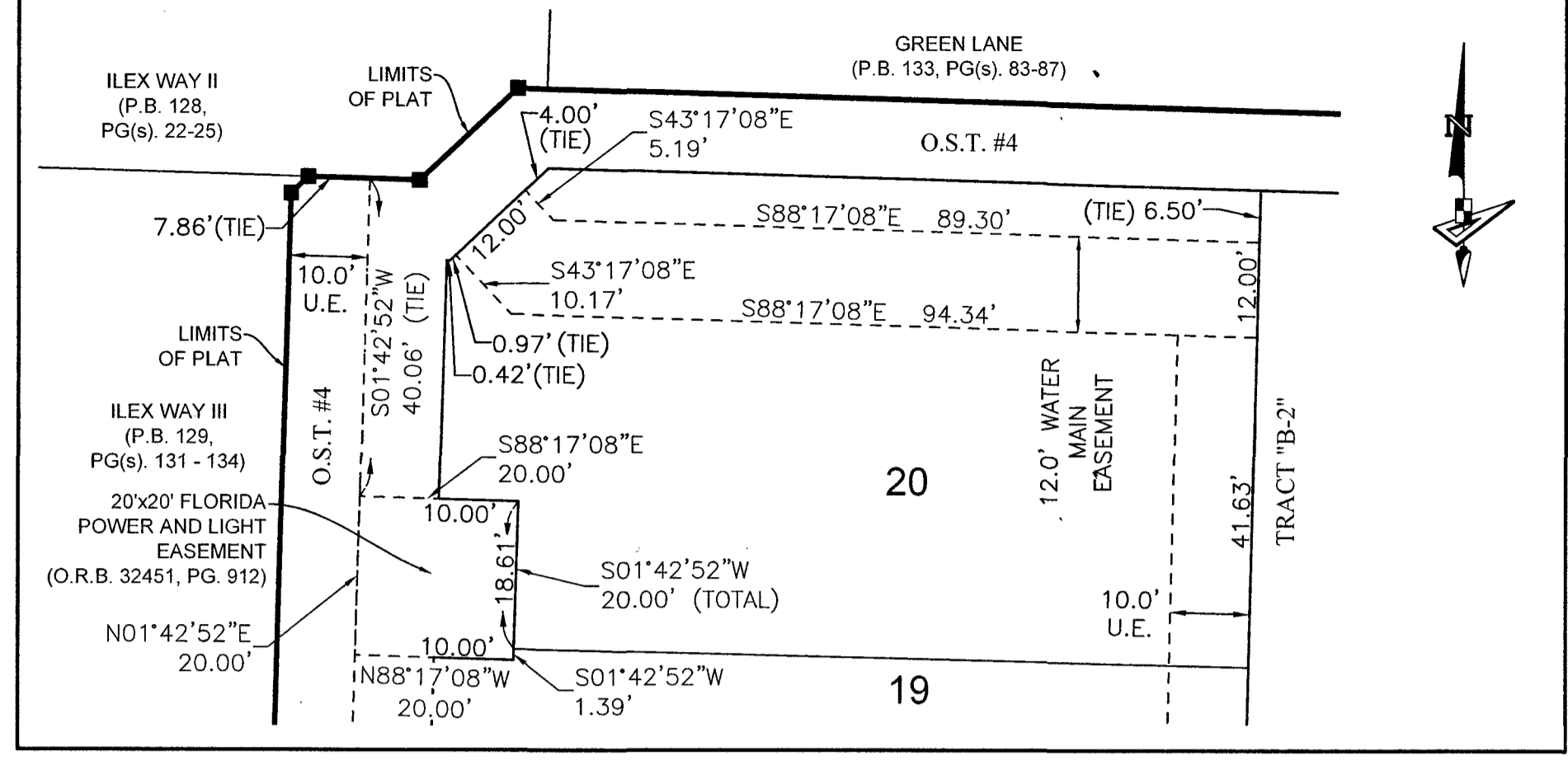


TERRACES OF WESTLAKE - PHASE I

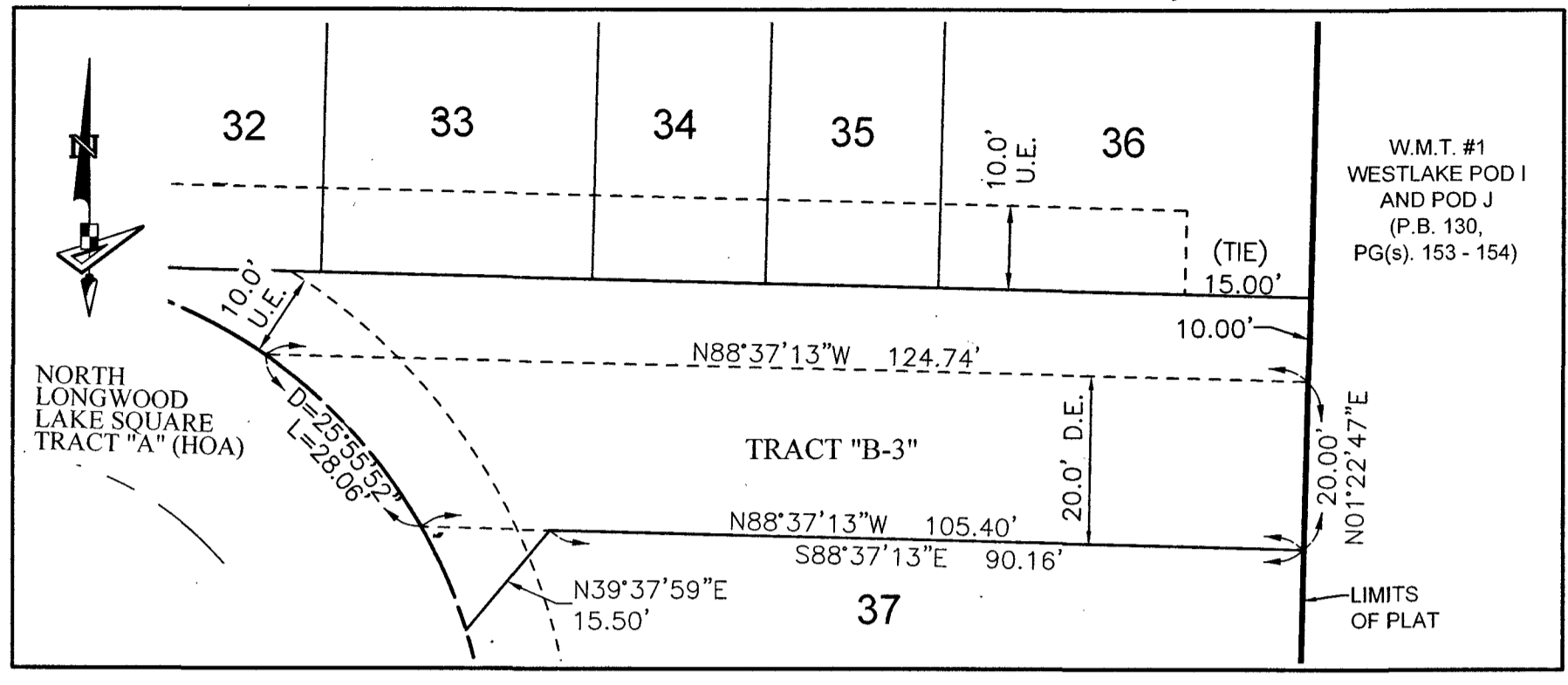
BEING A REPLAT OF A PORTION OF TRACT "A", WESTLAKE POD I AND POD J, PLAT BOOK 130, PAGES 153 AND 154, PUBLIC RECORDS OF PALM BEACH COUNTY, FLORIDA, LYING IN SECTION 12, TOWNSHIP 43 SOUTH, RANGE 40 EAST, CITY OF WESTLAKE, PALM BEACH COUNTY, FLORIDA.

146

DETAIL "A" (SCALE: 1"=20')



DETAIL "B" (SCALE: 1"=20')

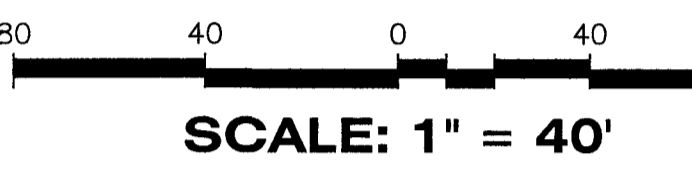


POINT OF COMMENCEMENT
NORTHEAST CORNER OF SECTION 1,
TOWNSHIP 43 S., RANGE 40 E.
SET 3.5" IRON PIPE "PUBLIC LAND SURVEY
CORNER-TALLAHASSEE MERIDIAN"
BRASS DISK "10' EAST" SET IN CONCRETE
FOUND 10' EAST ON SECTION LINE
N: 884626.7147 / E: 886137.1629
NAD83 (2007 ADJUSTMENT)
CERTIFIED CORNER RECORD #107597

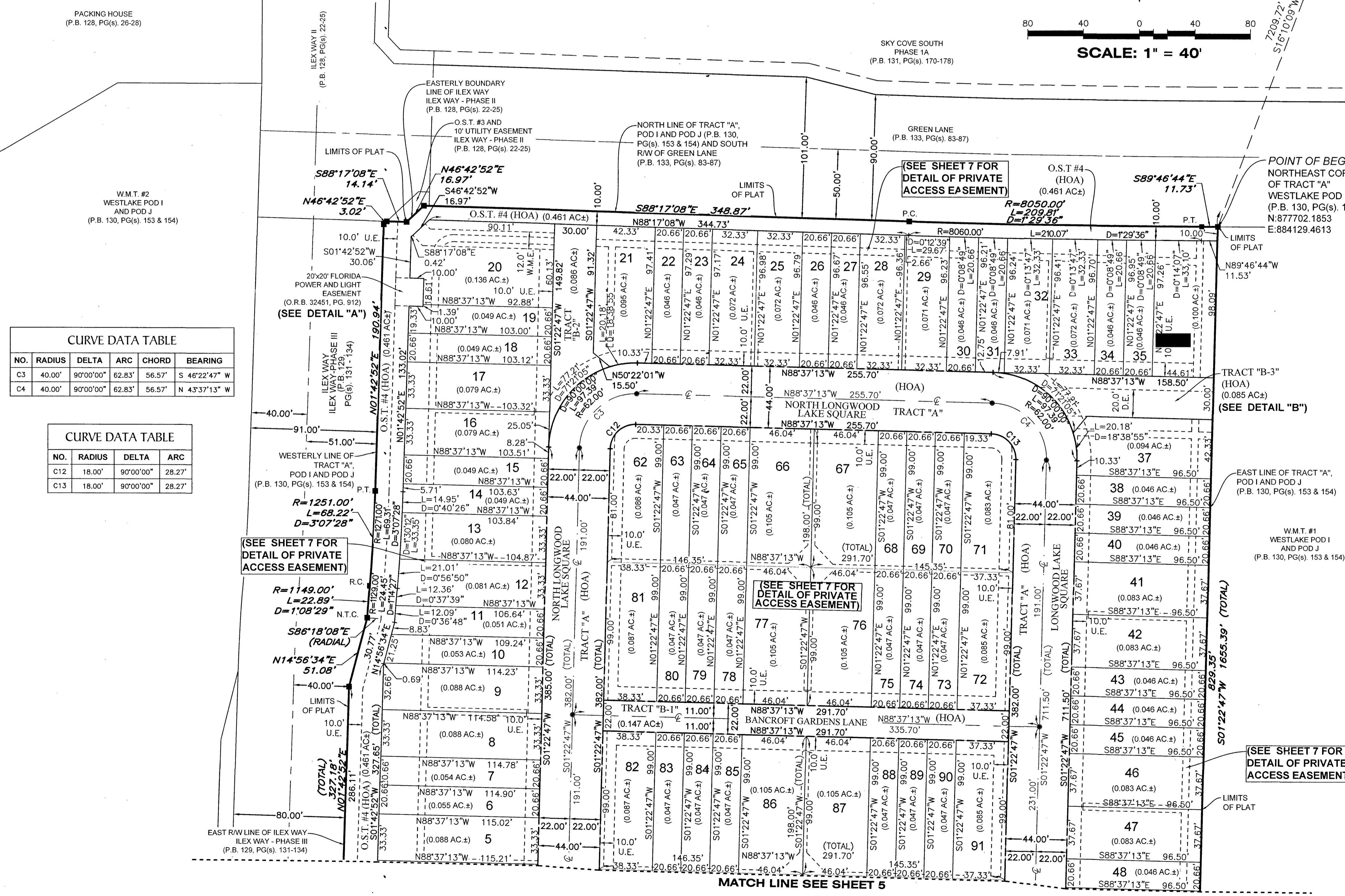
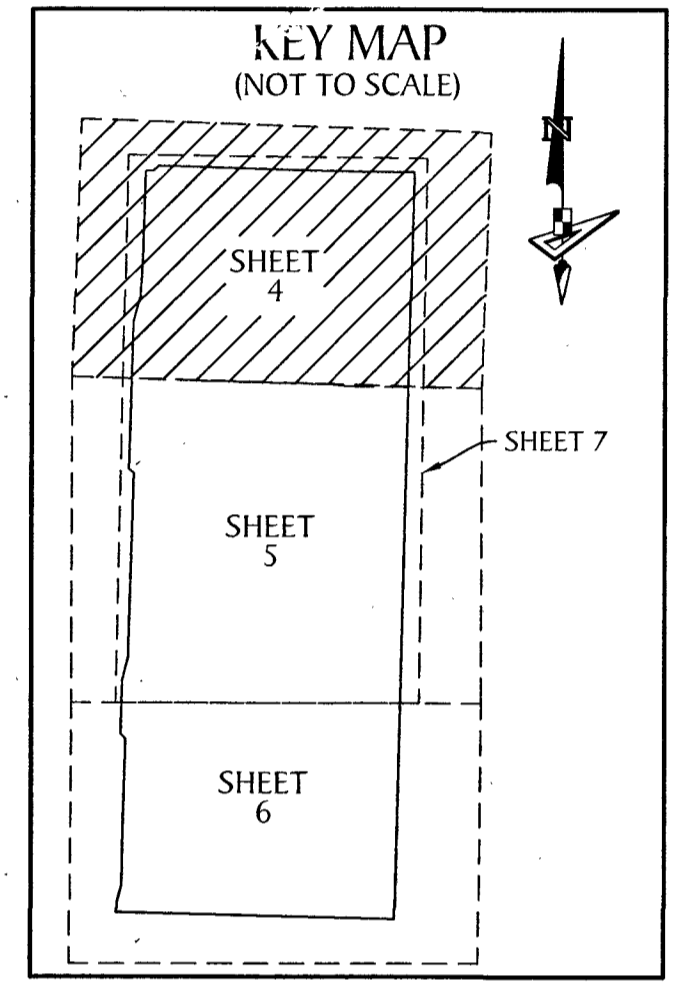
SOUTH LINE OF SECTION 31,
TOWNSHIP 42 S., RANGE 41 E.

BASIS OF BEARINGS
NORTH BOUNDARY OF SECTION 6,
TOWNSHIP 43 S., RANGE 41 E.
S.89°48'53"E, 5270.23' (MEASURED)
S.89°48'52"E, 5270.39' (COUNTY)

NORTHEAST CORNER
SECTION 6-43-41
FOUND BRASS DISK IN
CONCRETE "P.B.C."
N: 8818 E: 891407.3638
NAD83 (2007 ADJUSTMENT)
CERTIFIED CORNER
RECORD #107591



SCALE: 1" = 40'



CURVE DATA TABLE

NO.	RADIUS	DELTA	ARC	CHORD	BEARING
C3	40.00'	90°00'00"	62.83'	56.57'	S 46°22'47" W
C4	40.00'	90°00'00"	62.83'	56.57'	N 43°37'13" W

CURVE DATA TABLE

NO.	RADIUS	DELTA	ARC
C12	18.00'	90°00'00"	28.27'
C13	18.00'	90°00'00"	28.27'

- LEGEND**
- P.O.B. ----- POINT OF BEGINNING
 - P.O.C. ----- POINT OF COMMENCEMENT
 - P.B. ----- PLAT BOOK
 - D.B. ----- DEED BOOK
 - R.P.B. ----- ROAD PLAT BOOK
 - O.R./O.R.B. ----- OFFICIAL RECORDS BOOK
 - PG./PG(S) ----- PAGE(S)
 - NAD ----- NORTH AMERICAN DATUM
 - W.M.T. ----- WATER MANAGEMENT TRACT
 - O.S.T. ----- OPEN SPACE TRACT
 - P.B.C. ----- PALM BEACH COUNTY
 - U.E. ----- UTILITY EASEMENT
 - D.E. ----- DRAINAGE EASEMENT
 - F.M.E. ----- FORCE MAIN EASEMENT
 - W.M.E. ----- WATER MAIN EASEMENT
 - 12-43-40 ----- SECTION-TOWNSHIP-RANGE
 - AC.±/AC± ----- ACRES
 - LB ----- LICENSED BUSINESS
 - R ----- RADIUS
 - L ----- ARC LENGTH
 - D ----- DELTA ANGLE
 - CB ----- CHORD BEARING
 - C ----- CHORD
 - CL ----- CENTER LINE OF ROAD
 - N.T. ----- NON-TANGENT
 - N.T.C. ----- NON-TANGENT CURVATURE
 - N.T.I. ----- NON-TANGENT INTERSECTION
 - P.C. ----- POINT OF CURVATURE
 - P.T. ----- POINT OF TANGENCY
 - R.C. ----- REVERSE CURVATURE
 - R/W ----- RIGHT-OF-WAY
 - HOA ----- HOMEOWNERS ASSOCIATION
 - S.I.D. ----- SEMINOLE IMPROVEMENT DISTRICT
 - PRM ----- PERMANENT REFERENCE MONUMENT
 - ----- PERMANENT CONTROL POINT
 - ----- FOUND PERMANENT REFERENCE MONUMENT
 - ----- SET 4"x4" CONCRETE MONUMENT WITH 2" ALUMINUM DISK STAMPED "PRM LB 7768"

